

# Public Document Pack

South and West Plans Panel

Thursday, 28<sup>th</sup> November 2024

PowerPoint Presentation

This page is intentionally left blank

# SOUTH & WEST PLANS PANEL

28<sup>th</sup> November - 2024

Page 3



Agenda Item 10

# APPLICATION: 24/03369/FU

## PROPOSAL

**Change of use from a C3 (Dwelling House) to a C2 (Residential Institution) as young person's supported accommodation**

## ADDRESS

**16 Chiltern Court  
Rodley  
Leeds  
LS13 1PT**













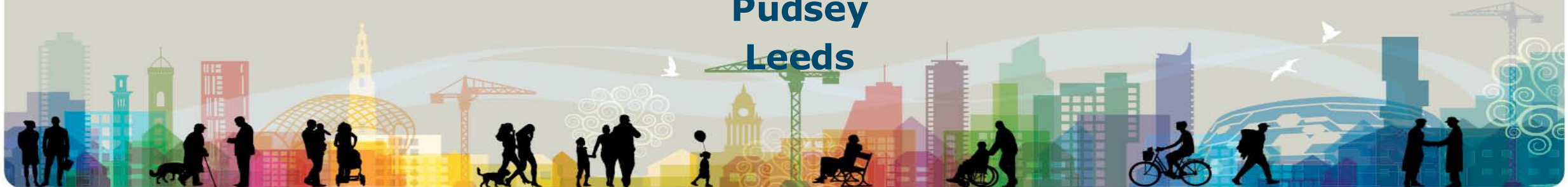
# **APPLICATION: 23/04830/FU**

## **PROPOSAL**

**Erection of a part 6 storey, part 4 storey, building comprising 19 apartments (Class C3) and commercial space (Class E) with associated parking, landscaping, and ancillary facilities**

## **ADDRESS**

**Land East Of Owlcotes Lane And South Of  
Woodlands Road  
Stanningley  
Pudsey  
Leeds**







Page 11

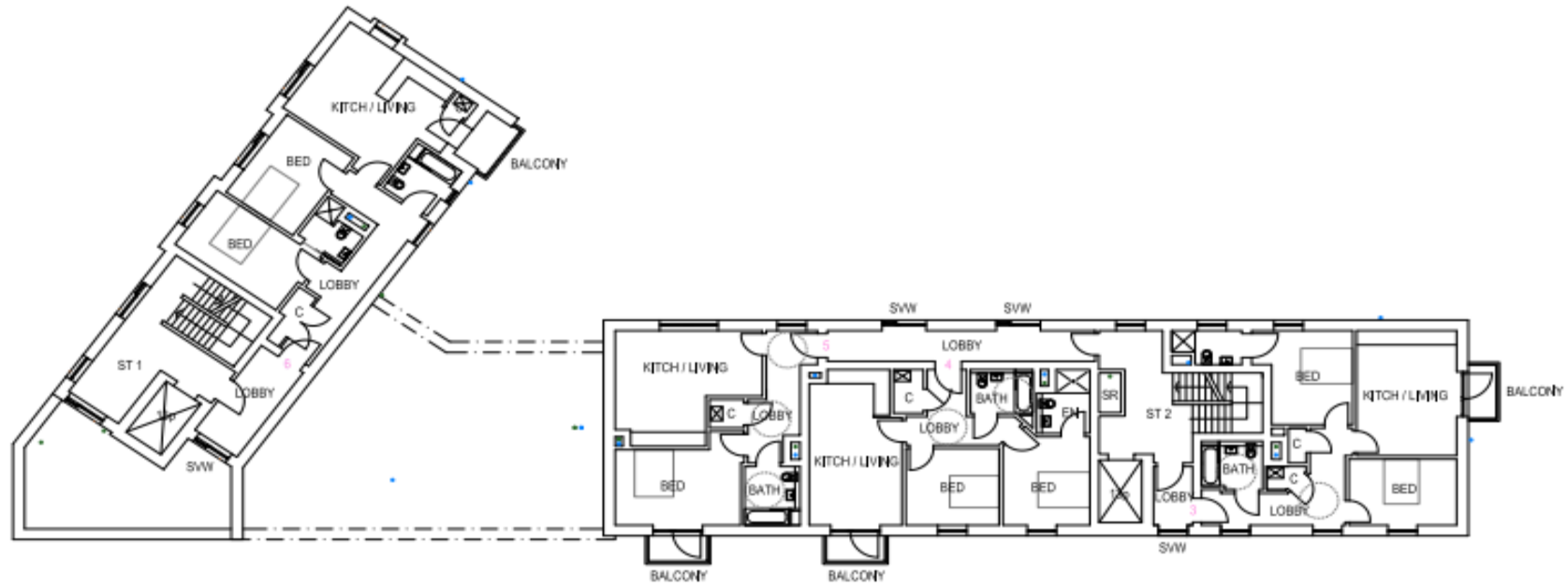




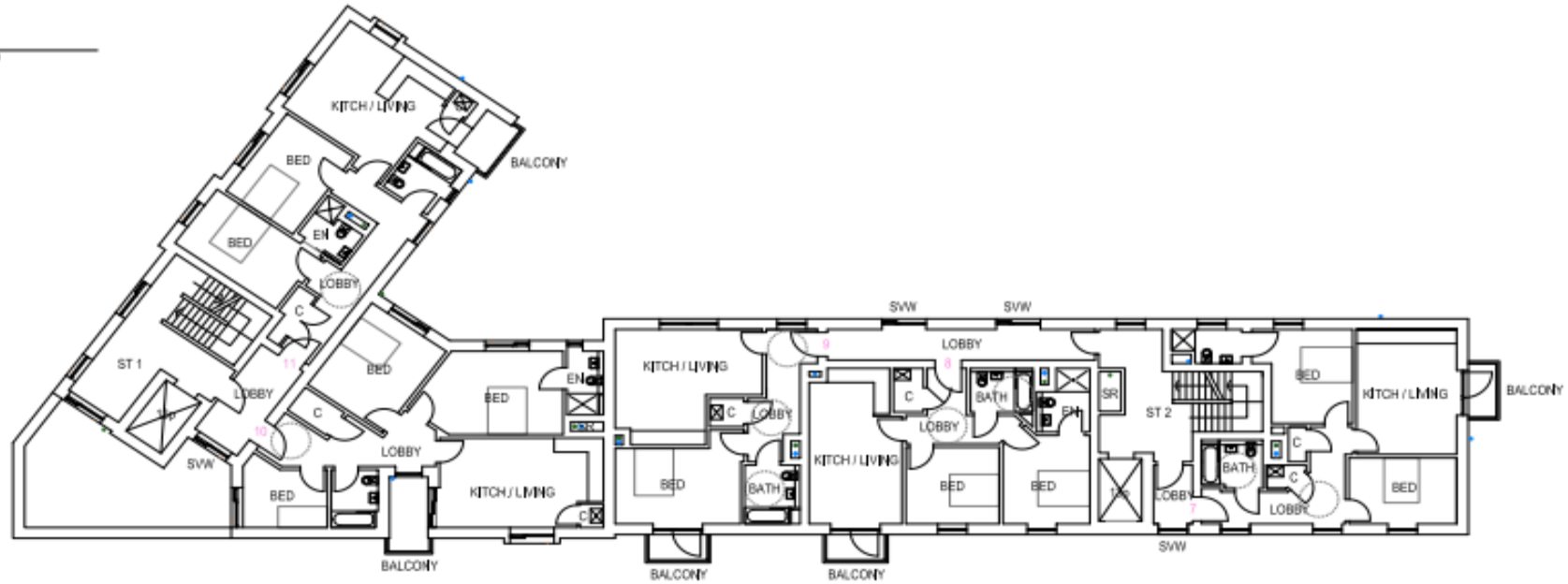
Page 12







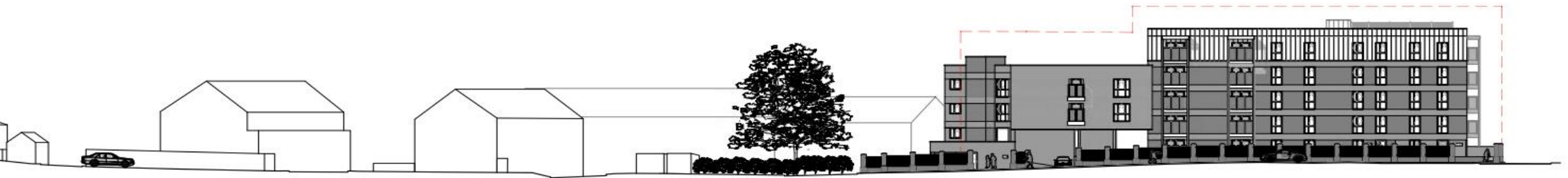
01 FIRST  
200M 1:200



OUTLINE OF INITIAL BUILDING MASSING SHOWN IN DASHED RED LINE



SECTION AA - SECTION THROUGH OWLCOTES LANE

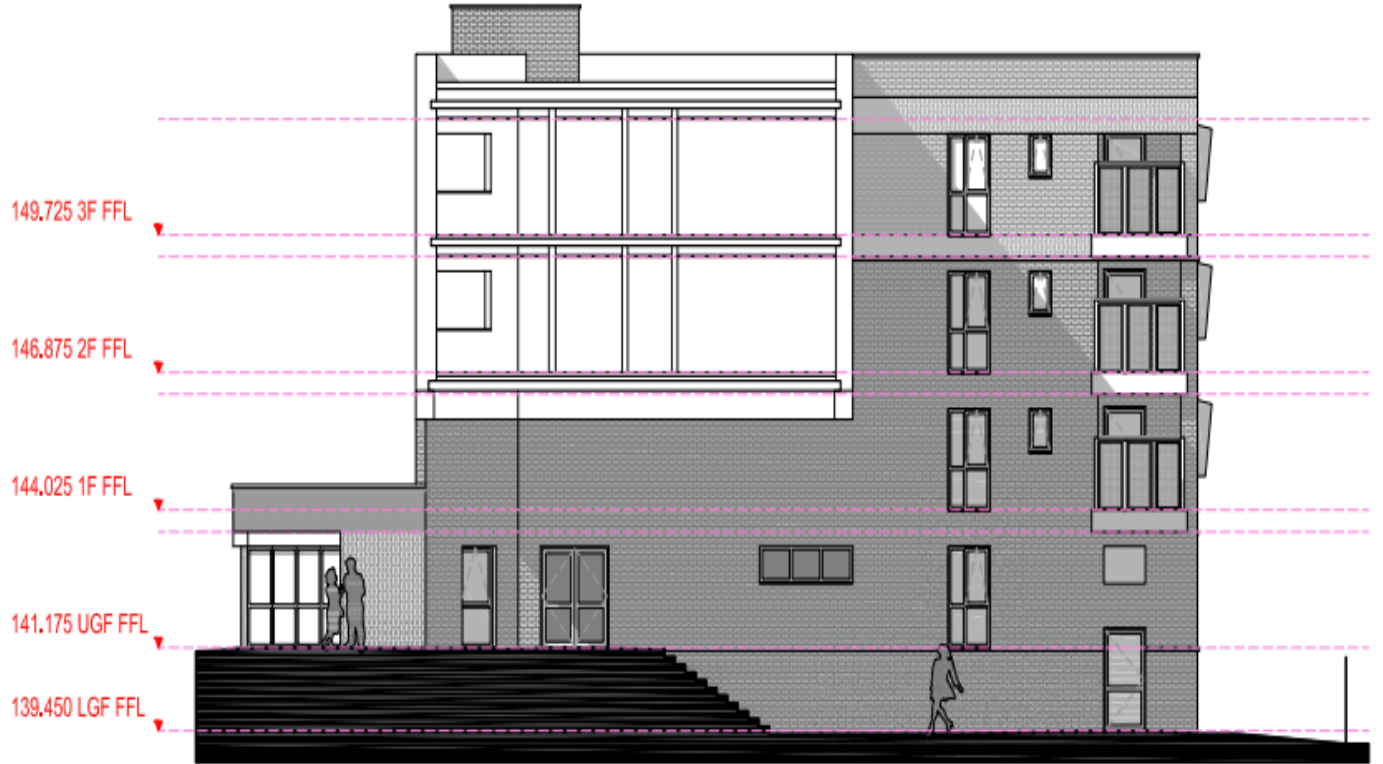
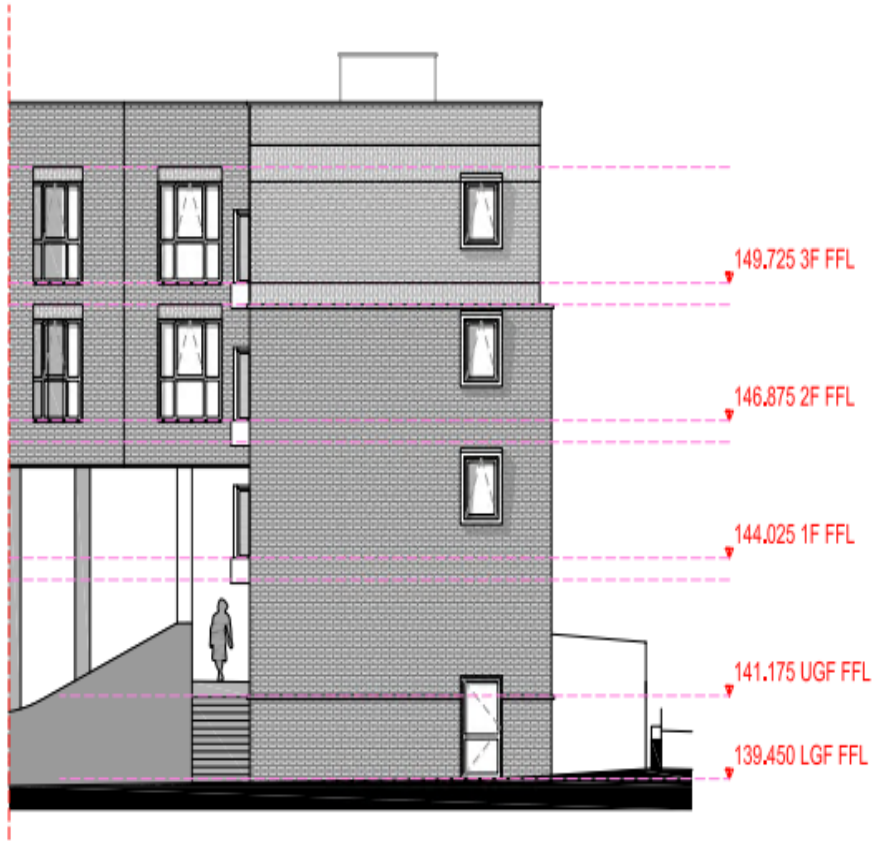


SECTION AA - SECTION THROUGH OWLCOTES LANE (WIDER CONTEXT)





01 REAR FACADE (TO OWLCOTES LANE)  
Scale 1:100



01 SIDE ELEVATION (BUILDING FACING WOODLANDS ROAD)  
Scale 1:100

02 REAR ELEVATION (BUILDING FACING WOODLANDS ROAD)  
Scale 1:100

## Materials



Red Brick

Buff Brick

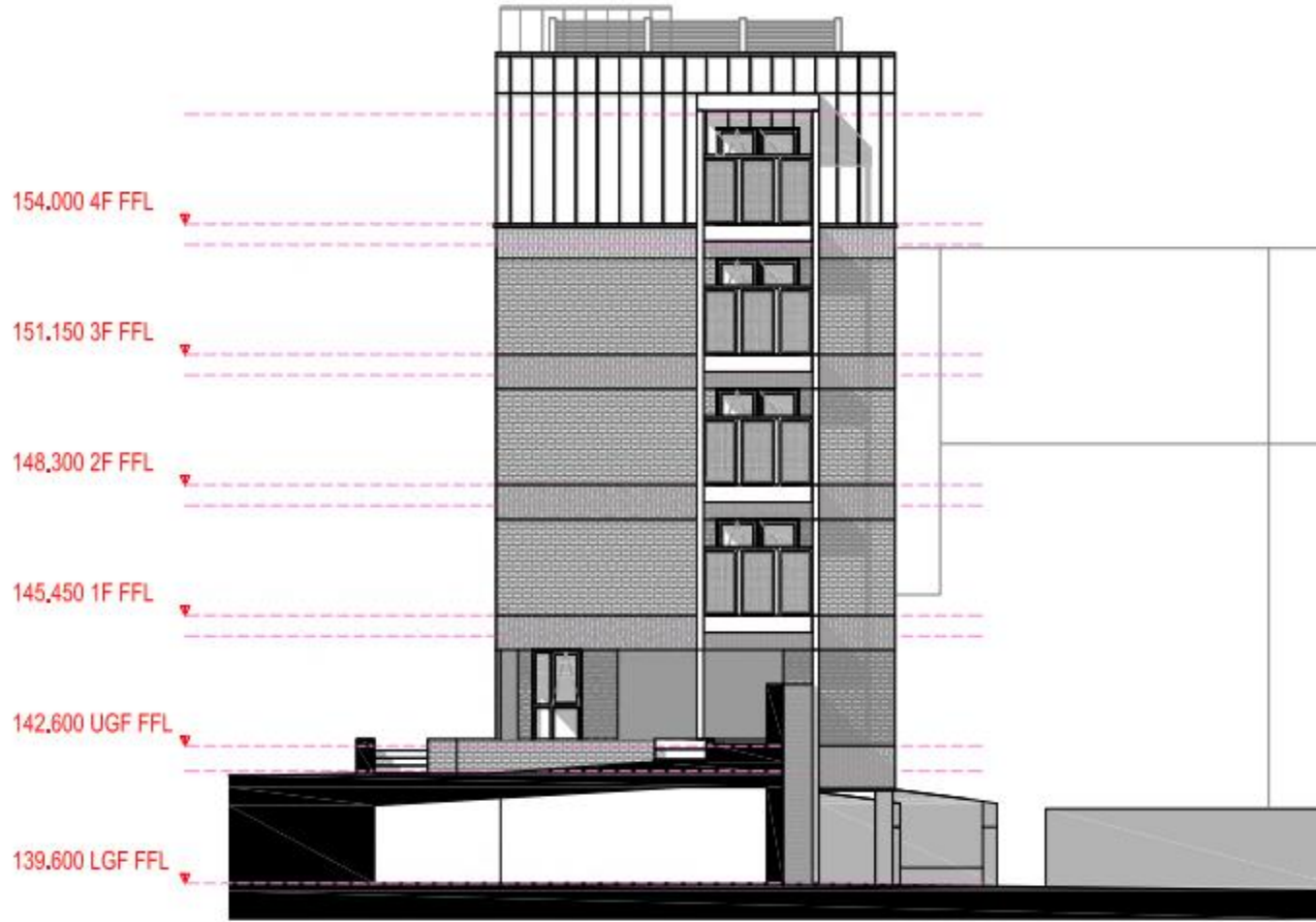
Render – Limestone White

Windows & Doors will be in anthracite grey (upvc or aluminum)

Balconies & Screening will be in anthracite grey metal work along with timber (tbc)

Standing Seem Roof

All materials to agreement of the LPA



02

SIDE FACADE (FACING RAILWAY STATION)

Scale 1:100

















# APPLICATION: 22/07648/FU

## PROPOSAL

**Erection of a 120 capacity Wedding Venue, 40  
Holiday Lodges, and a Cafe/Community Hub  
building**

## ADDRESS

**Fleet Lane  
Oulton  
Leeds  
LS26**





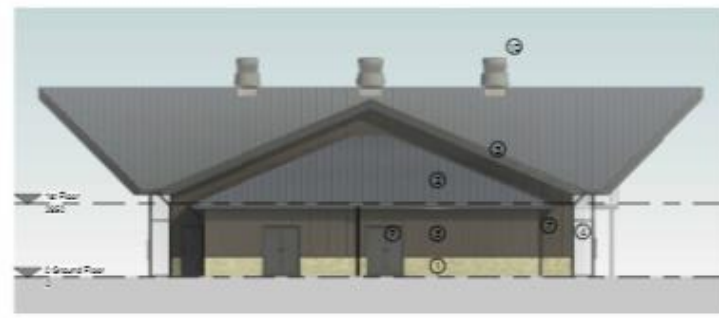
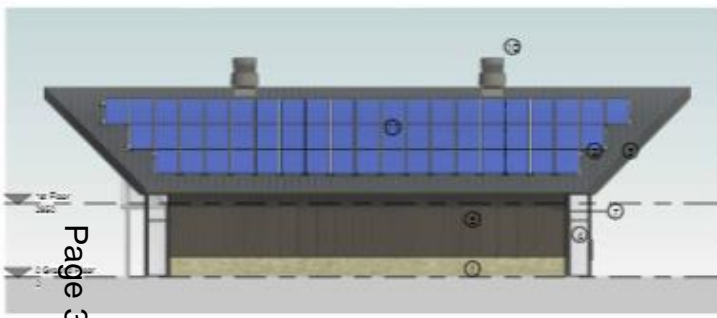




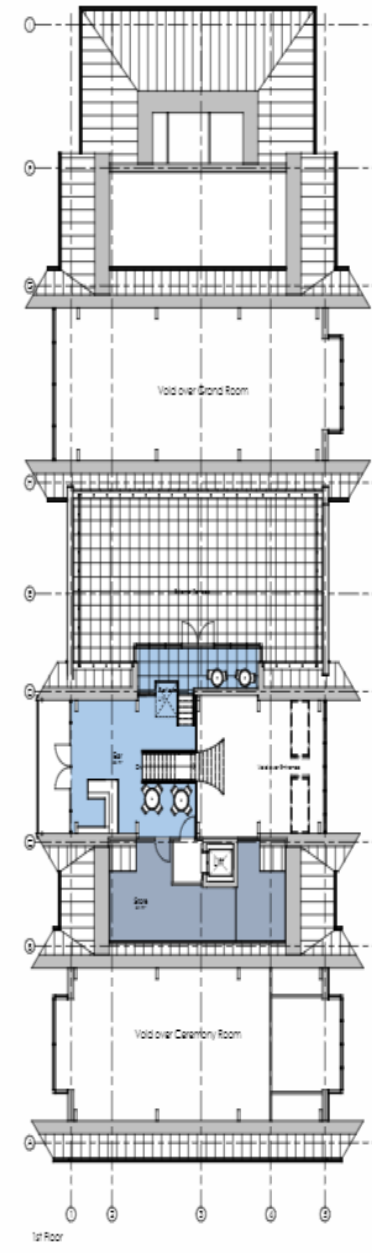
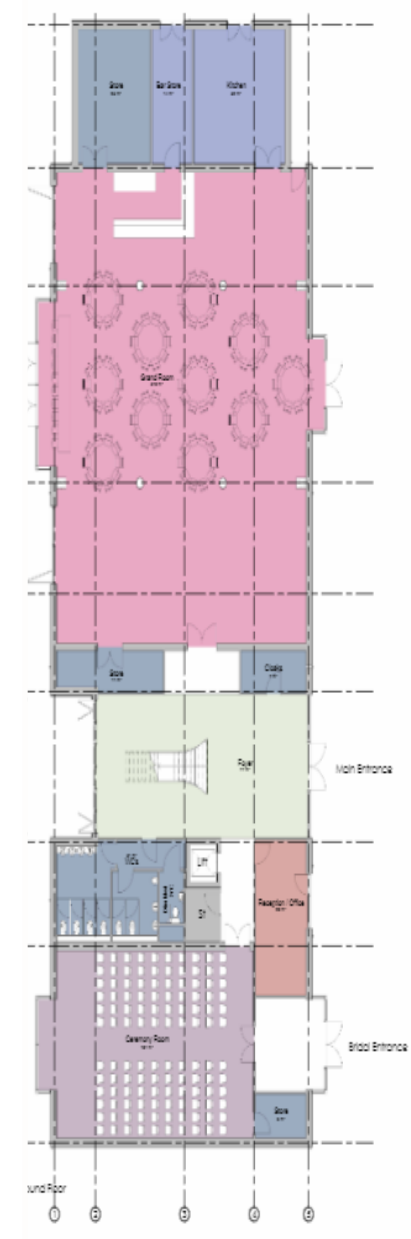








Page 33





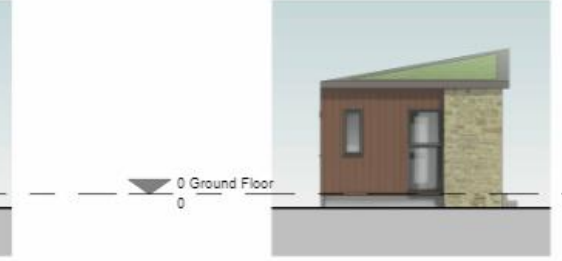




Page 36



North



East



South



West

Materials Schedule

- ① Stone to approved sample
- ② Sedum Roof
- ③ Cedar Eaves / Soffit
- ④ Double Glazed Window to approved sample
- ⑤ Cedar Cement Cladding to approved sample
- ⑥ Double Glazed Door to approved sample
- ⑦ Black UPVC Rainwater Goods
- ⑧ Glass Balustrade
- ⑨ Double Glazed Door to approved sample





North



East

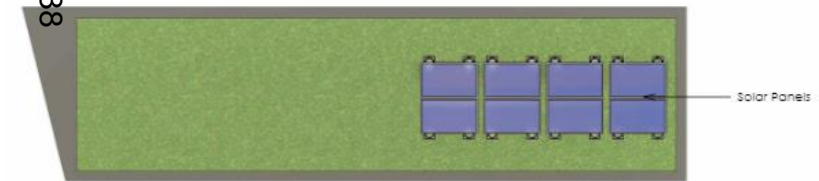


South



West

Page 38



Roof

- Materials Schedule
- ① Stone to approved sample
  - ② Sedum Roof
  - ③ Cedar Eaves / Soffit
  - ④ Double Glazed Window to approved sample
  - ⑤ Cedar Cement Cladding to approved sample
  - ⑥ Double Glazed Door to approved sample
  - ⑦ Black UPVC Rainwater Goods
  - ⑧ Glass Balustrade
  - ⑨ Double Glazed Door to approved sample



North



South



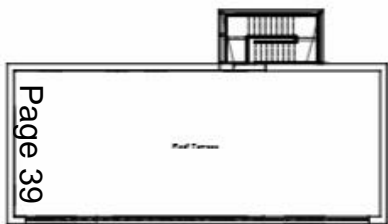
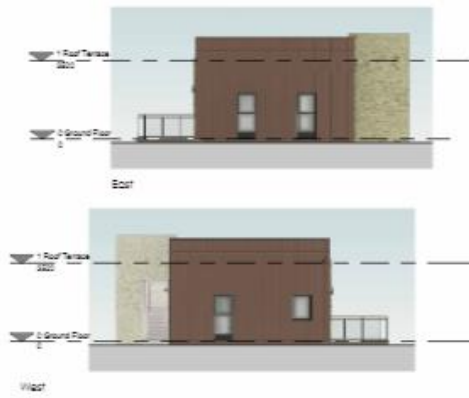
East



West

- Materials Schedule
- ① Stone to approved sample
  - ② Sedum Roof
  - ③ Cedar Eaves / Soffit
  - ④ Double Glazed Window to approved sample
  - ⑤ Cedar Cement Cladding to approved sample
  - ⑥ Double Glazed Door to approved sample
  - ⑦ Black UPVC Rainwater Goods
  - ⑧ Glass Balustrade
  - ⑨ Double Glazed Door to approved sample





Page 39

6 1 Roof Terrace  
1:100



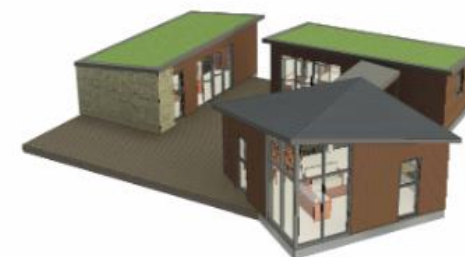
5 0 Ground Floor  
1:100



3D View 1



3D View 2



3D View 3





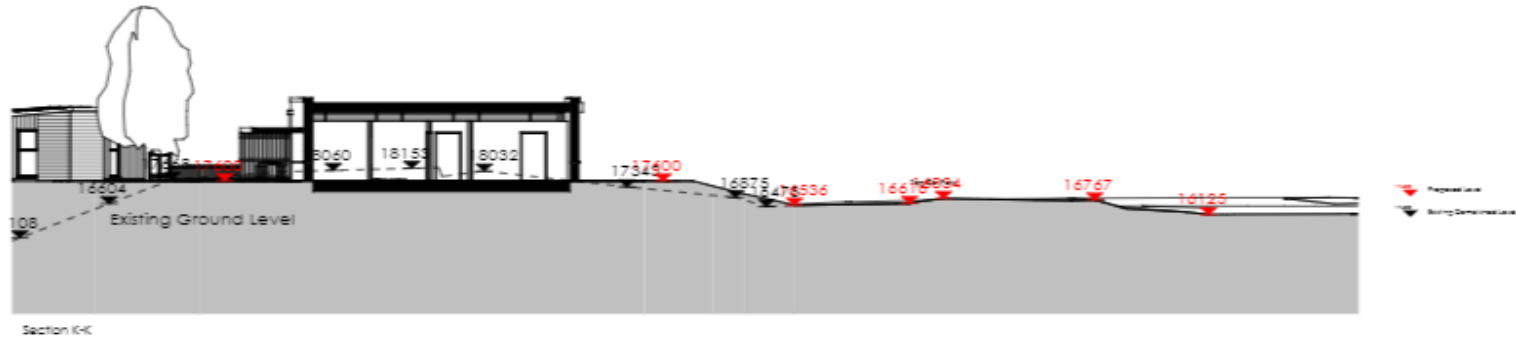




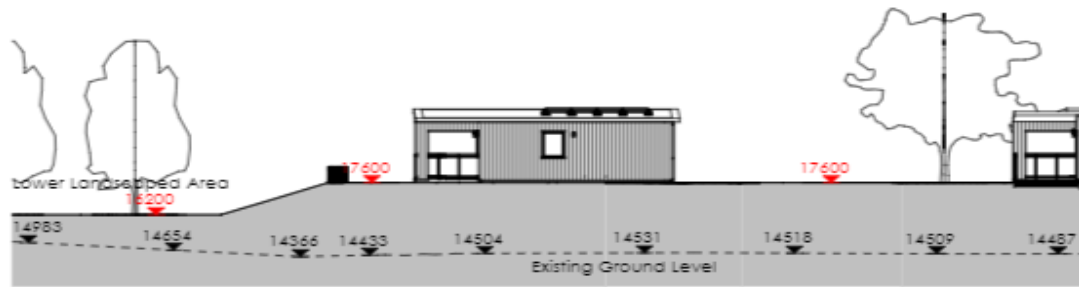
Section U-U



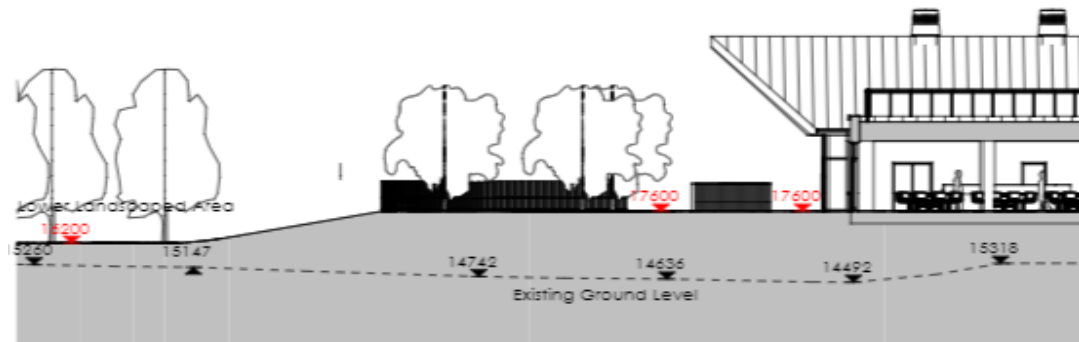
Section T-T



Section K-K



Section L-L



Section M-M









# SOUTH & WEST PLANS PANEL **END OF PRESENTATION**

Page 47



This page is intentionally left blank